

A NEW STIGMODERA FROM WESTERN AUSTRALIA.

By

H. J. CARTER, B.A.,
Honorary Entomologist, Australian Museum.

(Figure 1.)

Stigmodera (Castiarina) flavocoerulea, n. sp.

OBLONG. Head, prothorax, scutellum, underside, appendages and elytral apex (narrowly) brilliant blue: elytra otherwise (save for a narrow blue basal border) pale straw colour.

Head widely sulcate, finely punctate.

Prothorax, apex and base lightly bisinuate, the latter nearly twice as wide as former, with a small central fovea and minute basal excisions, all angles wide: sides widely and evenly rounded, without sinuation: disk with a narrow, arcuate ridge at apical third, containing some laevigate spaces; otherwise finely, evenly punctate, the punctures round and moderately close, much finer in middle, without signs of a medial line.

Scutellum elongate, cordiform: sulcate in middle.

Elytra widened at shoulders, widely and lightly constricted behind them; not much narrowed behind, apices sharply bispinose, external spine the longer, subapical margins serrulate: striate-punctate, the striae rather wide, intervals very lightly convex, finely and irregularly punctate. Underside glabrous, nitid, with fine, shallow punctures.

Dim. 16 × 6 mm.

Hab.—*Western Australia*: Wurarga (Mr. A. Goerling).

A single example sent is so distinctly separated from its allies as to deserve description. In general form and pattern it most resembles *S. luteipennis* L. & G., from which it differs in colour, wider and more convex prothorax and strongly spined apices. In colour its upper surface comes near some of the pale varieties of *S. yarelli* L. & G. (without, however, the yellow border of prothorax). Holotype presented to the Australian Museum.

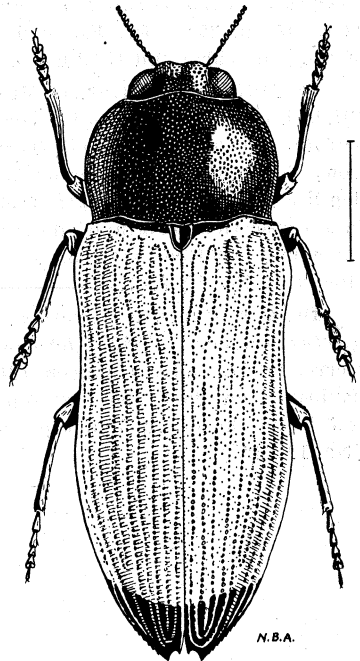


Fig. 1.—*Stigmodera (Castiarina) flavocoerulea*, n. sp.