

NOTE ON CICINDELA JUNGI AND DESCRIPTIONS OF
TWO NEW BEETLES.

By W. J. RAINBOW, F.L.S., F.E.S., Entomologist.

(Figures 35-37.)

Family CICINDELIDÆ.

CICINDELA JUNGI, *Blackburn.*

The present paper contains descriptions of two apparently undescribed beetles collected by myself at Botany, some time ago.

In addition to these, which are figured herewith, I include a figure of *Cicindela jungi*, Blackburn, a form not common in collections. This species was described by Blackburn from material collected by Mr. Jung, on Yorke Peninsula, South Australia. The specimen (fig. 35) in our cabinets was also collected in South Australia, but the exact locality is not given. In reference to this species Blackburn says:—"The female examples before me have the apex of the suture distinctly spiniform, but in the unique male there is no trace of a spine; perhaps this is an abnormal specimen."¹ The example in our collection, which is also a female, bears out Blackburn's description in this respect, but differs in the huge conspicuous blotch decorating the elytra, which

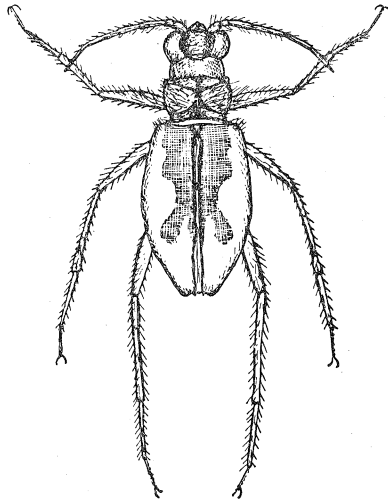


Fig. 35, *Cicindella jungi*, Blackburn.

in our specimen is of a brilliant coppery-tint, and not green as in those from Yorke Peninsula; the lateral elytral margins in the former are also coppery, a point not mentioned by Blackburn in respect of his species. Probably his specimens were not so marked.

¹ Blackburn—Trans. Roy. Soc. S.A., xxv., 1901, p. 15.