

AUSTRALIAN MUSEUM SCIENTIFIC PUBLICATIONS

Skuse, F. A. A., 1893. Remarks on a new *Cyria* from New South Wales. *Records of the Australian Museum* 2(4): 45–, plate xi, figures 4–10. [28 February 1893].

doi:10.3853/j.0067-1975.2.1893.1190

ISSN 0067-1975

Published by the Australian Museum, Sydney

nature culture **discover**

Australian Museum science is freely accessible online at
<http://publications.australianmuseum.net.au>
6 College Street, Sydney NSW 2010, Australia



H. whiteleggei; but having mutually examined specimens of each, we have ascertained that *H. regalis* is constantly much the larger insect in both sexes, and that there exist characters in the front tarsi and male genital organs which prove that Mr. Carpenter's species is sufficiently distinct to deserve a different name.

Family LIMNOBATIDÆ.

Genus *Limnobates*, *Burm.*

Limnobates strigosa, sp. n.

Apparently of wide range.

REMARKS ON A NEW *CYRIA* FROM NEW SOUTH WALES.

By FREDERICK A. A. SKUSE, F.L.S., Entomologist.

[Plate XI. figs. 5 - 10.]

COLEOPTERA.

BUPRESTIDÆ.

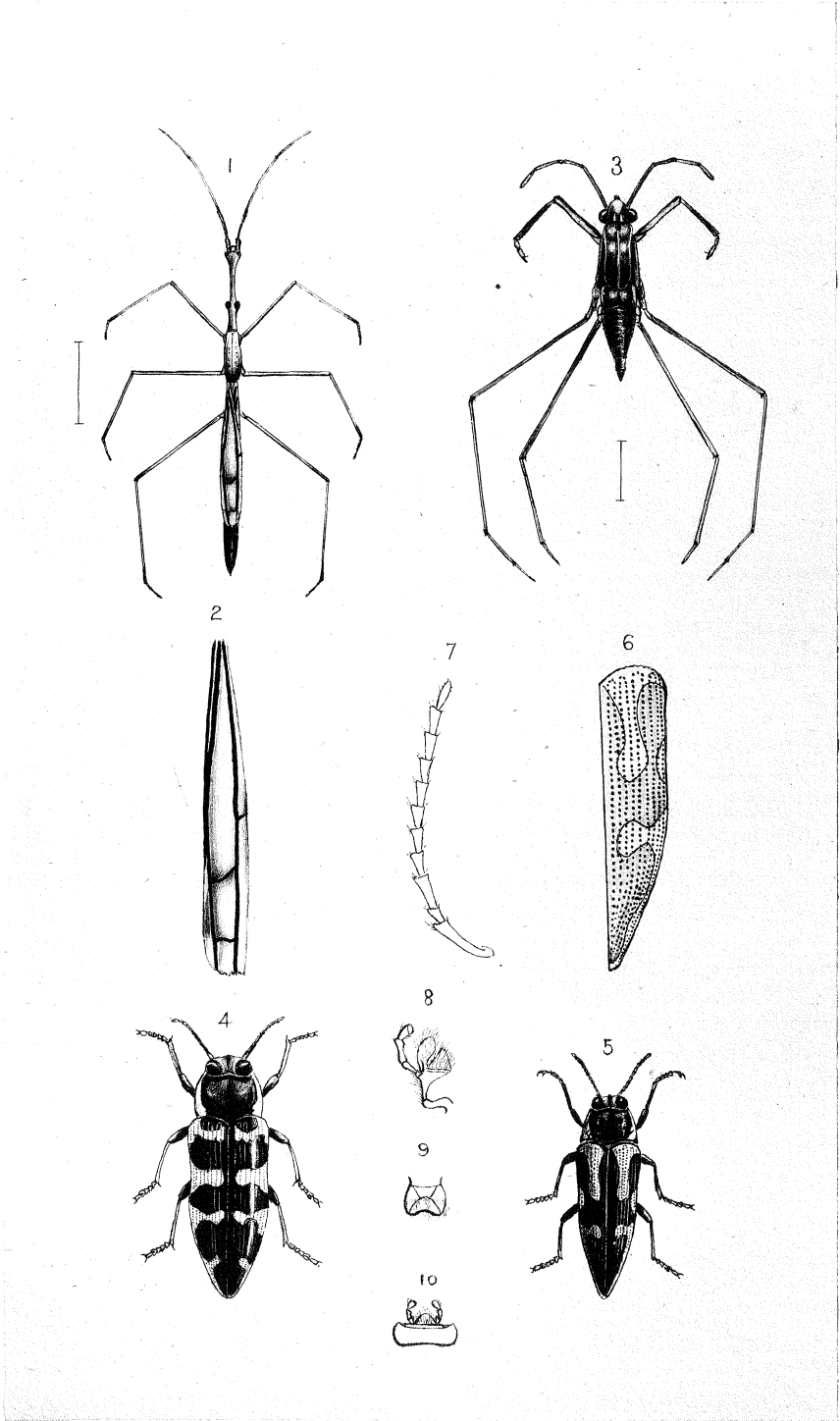
Cyria, *Solier.*

THE form figured (pl. xi. figs. 5 - 10) represents a new species of *Cyria* originally proposed to have been described in the present paper, but recently named by the Rev. T. Blackburn (Trans. Roy. Soc. S. Aust. xv. i. p. 41, 1892) as *C. tridens*, from a specimen received from this Museum. The series of about a dozen examples was originally obtained by the author from Mr. W. Smart, of Manly, who procured them from an amateur collector on the Richmond River, N.S.W. By some mistake Mr. Blackburn also fails to mention the locality or source from which he received the specimen from which his description was derived. Fig. 4 represents *C. imperialis*, Don., in contrast with the present insect.

EXPLANATION OF PLATE XI.

- Fig. 1. *Limnobates strigosa*, Sk., magnified.
,, 2. Elytron of same, more magnified.
,, 3. *Hydrometra australis*, Sk., magnified.
,, 4. *Cyria imperialis*, Don., natural size.
,, 5. *Cyria tridens*, Blackb., natural size.
,, 6. Right elytron ; 7, antenna ; 8, 9, and 10, head-parts of same ; all magnified.

[The figures have been reproduced from drawings by Mr. G. H. Barrow, of the Australian Museum, by the photoline process.]



G. H. BARROW, del.

Reproduced by the Photoline Printing Co., Sydney.